



Tech Tip

January 2024

TRANE
TECHNOLOGIES

BUILT TO A HIGHER STANDARD
American Standard
HEATING & AIR CONDITIONING

Link Zoning: Sensor Assignment



General Information

Before applying/installing Link zoning log into comfortsite.com for Trane dealers or [Asdealernet.com](https://asdealernet.com) for AM STD dealers. Then go to Training Center → Fieldtech Talk Sessions. Click on [FTT_Sessions.pdf](#), this will open a document. Under Recorded Webinars there will be active links of previously recorded information. Watch [Link Zoning \(Part 1&2\)](#) for detailed information on zoning application as well as Link Zoning configuration.

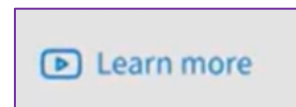
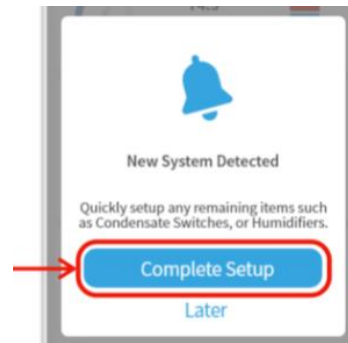
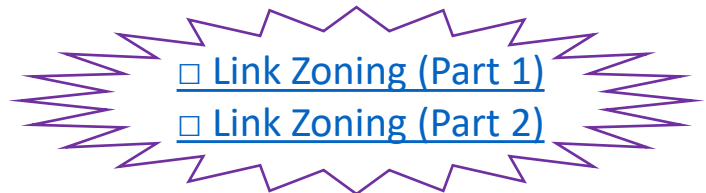
Link zoning currently is only used with a fully communicating Link system excluding XV17 outdoor unit. Utilizing the Diagnostic app is the preferred method when setting up a Link system. There is "Complete Setup" at first connection to system that will come up. This will walk you through settings for the system. There are short videos provided during certain setting categories which are noted as "[Learn more](#)".

FieldTechTalk Sessions

[View Printable Version](#)

Additional Information

- [FTT_Sessions.pdf](#)



Field Service Representative Contact

1-884-358-7263

1-833-267-8376

Tech Tip

January 2024

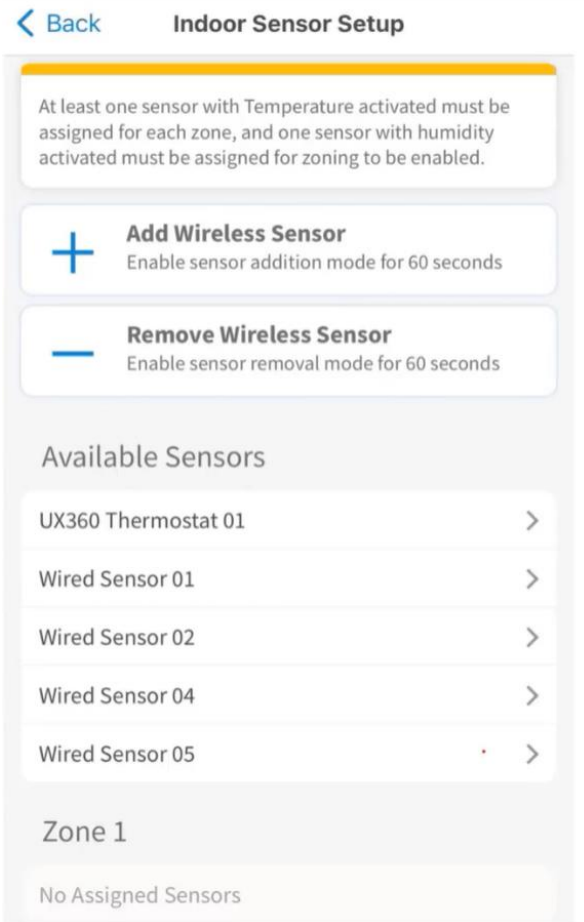
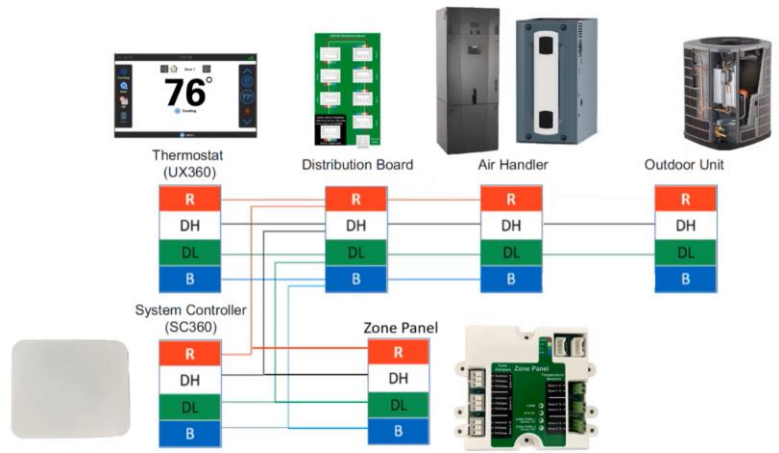
Link Zoning: Sensor Assignment

Once wired properly and system is powered up. If everything is correctly wired, the zoning panel/s will be seen in equipment summary confirming proper communication.

After you have gone through most of general zoning settings like enabling zoning, target static pressure, damper travel time, auto detected dampers and set zone sizing.

It is required to assign at least one sensor to each zone and one sensor with humidity must be assigned for zoning to be enabled.

The UX360 thermostat can be paired to any zone which reports both temperature and humidity for that zone. Wired sensors are auto detected to the zone they are wired to at zoning panel and only report temperature. Wireless sensors once added will report both temperature and humidity. If the TSYS2C60 system controller is and set to be in conditioned space. It can be used as a zone sensor which can report temperature and humidity.



Wired Sensor
ZZSENSAL0400AA

Wireless Sensor
ZSENS930AW00MA

Tech Tip

January 2024

Link Zoning: Sensor Assignment

Available sensor list press on each sensor to see sensor information as well as to assign sensor to a zone. Sensor can be named and if capable can choose to use humidity or not. Once all sensors are assigned, it will show no sensor at available sensor list.

Individual zones will show sensors assigned to it. Each zone can use up to four sensors for averaging. It will auto average the sensors assigned to a zone. For example, 3 sensors assigned to 1 zone each will have a value of 33.3%.

